

# Life in Ancient Greece

# ASHMOLEAN

## Key Stage: 2

### National Curriculum

### Subject Area/s:

History, Science, potential for cross-curricular work

### Length of session:

1 hour and 30 minutes (KS2)

### Max group size: 32 pupils

## Session outline

This session explores life in Ancient Greece. In this interactive session pupils will explore the galleries to find out more about key aspects of life in Ancient Greece.

**Activity 1:** Evidence from buildings and statues.

- Pupils will explore a model of the Acropolis to learn more about Greek buildings.
- They will look at statues to discover who the Ancient Greeks admired and why.
- They will be introduced to the concept of democracy.

**Activity 2:** Evidence from objects

- Pupils will handle original artefacts to discover more about the Ancient Greek World and the materials used by ancient craftsmen.
- They will search the gallery for objects highlighting aspects of Ancient Greek life. They will come face to face with heroes, gods and goddesses depicted on coins and pots.

**Activity 3:**

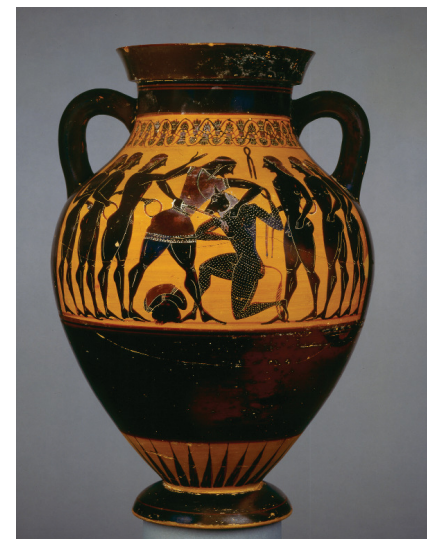
- Pupils will take part in a drama activity focussing on an aspect of life in the Ancient Greek World.

## Learning Outcomes

- Understanding more about life in Ancient Greece and how the classical world still impacts on us today.
- Understanding more about the different kinds of materials used by craftsmen.
- Knowledge and understanding of using archaeological evidence to learn about the past.
- Awareness of similarities and differences between life in Ancient and today.
- Understanding that objects can give us information about how people lived and worked.
- Improved speaking and listening skills.

**'We had an absolutely wonderful time learning about life in Ancient Greece. The children loved all the activities'**

**Key Stage 2 teacher  
September 2015**



**Please see our current programme for information about dates we can offer and how to book**

Education Department

Ashmolean Museum

Beaumont Street

Oxford OX1 2PH

T. 01865 278015

E. [education.service@ashmus.ox.ac.uk](mailto:education.service@ashmus.ox.ac.uk)

[www.ashmolean.org/learn](http://www.ashmolean.org/learn)

## Pre visit activities

- Look at a map of Ancient Greece. Locate key city states.
- Find out the date of the height of the classical period.
- Research Greek style buildings in Britain.

## Post visit activities

- Look at the Ancient Greek alphabet. Write your name in Greek.
- Design your own Greek coin.
- Discover more about Theseus and the Minotaur and other Greek myths and legends.
- Learn more about Greek statues and why they were made.
- Discover more about eating and drinking in the Ancient Greek world, and the similarities and differences with today. Create your own Ancient Greek menu.
- Make replicas of Ancient Greek objects and create your own museum display in the classroom

## Resources

The following resources are available to download on our website:

Information sheets about Greek pots and coins.

Information about self-guided activities.

Images of some of the objects used in the session.

[www.ashmolean.org.uk/learn](http://www.ashmolean.org.uk/learn)



This oil jar (lekythos) is on display in Gallery 16, Greece. It shows the winged goddess of victory, Nike, playing a lyre.