

5 Find an unusual hat

This hat belonged to John Bradshaw, a judge at the trial of Charles I, in which the King was found guilty of treason, and executed soon afterwards. The hat has a wide leather brim, but the leather has peeled off the top part of the hat to reveal metal bars inside.



Challenge: Why do you think Bradshaw wore a metal reinforced hat during the trial?

6 Find a strange shoe

This shoe belonged to John Biggs who probably executed Charles I. The shoe is very big and is made of hundreds of little scraps of leather all nailed together. Biggs made it himself. When a bit of leather wore out, he would simply nail another piece over the top, so it got bigger and bigger! Biggs spent the later part of his life as a hermit, living alone in a cave. He made his own clothes using bits of leather given to him by people in the local village of Dinton.



Challenge: How do you think John Biggs would have walked in his giant shoes? Show your walk to the rest of your family.

Now head upstairs to level 2 and find gallery 44: European Art



7 Find this group portrait by William Dobson



This portrait shows three men sitting around a table. They are Royalists, like Ashmole, and want to show how loyal they are to King Charles I. On the left stands Prince Rupert, the King's nephew, holding a scroll of paper. A large brown dog sits at his feet. In the middle, a man dips his hat into a glass of red wine. On the right, another man sits holding a bottle.

It is thought Prince Rupert sent the scroll to Charles I when the King was angry with him for losing a battle. He left it blank to show he was innocent of any crime and the King forgave him.

Challenge: Imagine you have lost an important battle and the King is angry with you. Write a message in the scroll below to win his favour again.



Well done – hope you enjoyed your Royal Oxford Adventure! You have found out about some of the friends and enemies of King Charles I, and how Oxford played a part in the English Civil War story.



SUITABLE FOR AGES 7+

ROYAL OXFORD ADVENTURE

Did you know that King Charles I lived right here in Oxford, during one of the most dramatic periods of English history? Explore our Civil War objects and find out more.

King Charles I lived at Christ Church College in Oxford for four years during the English Civil War (1642–1651). Charles had fallen out with Parliament, because he believed that God had given him the divine right to rule his way, but Parliament disagreed. He left London to get away from his enemies and Oxford became home to Royalty!

Portrait of King Charles I
(not on display)



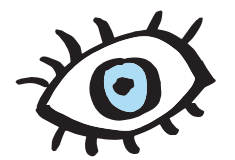
Start in gallery 7: Money, on the lower ground floor



1 Find a silver coin called the 'Oxford Crown' displayed in a case by itself

On this silver coin, King Charles I sits on his horse with the skyline of Oxford city in the background. It shows us how he still wanted to be seen as powerful and important. Latin writing around the edge of the coin says 'Charles, by the grace of God, King of Great Britain, France and Ireland.'

Challenge: Now find and touch a giant size model of this coin nearby. Can you find out the date of the coin (check out the other side)?



Go to nearby gallery 2: The Ashmolean Story

2 Find this painting of Sir Elias Ashmole

This portrait is of Elias Ashmole, the founder of the Ashmolean Museum. Ashmole is standing proudly, wearing a large wig of long wavy brown hair. He wears a red velvet coat and a chunky gold chain and medal. His hand rests on a large book next to some more golden medals.



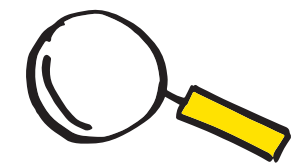
Challenge: Ashmole loved to collect things. He started the museum with the objects you see around you. But can you guess what he loved to collect the most? Complete the words below. You can check the answers at the bottom of page.

ED_L_ and B_K_

Ashmole was a Royalist which means he was on the side of King Charles I. He lived in Oxford during the Civil War and was in charge of weapons and ammunition for the King's soldiers to use in battle.

Find some Civil War weapons and armour in the case nearby.

- ☐ CANNONBALLS
- ☐ MUSKET GUN
- ☐ MODEL OF A CANON
- ☐ HELMET WITH BULLET MARKS



3 Find a painting of King Charles I in a glass case nearby

This painting gives us a profile (side) view of the King who has long brown hair and a pointy beard and moustache. He is wearing a black robe with a white lacy collar. A medal hangs around his neck on a green silk ribbon, which he is touching with one hand.

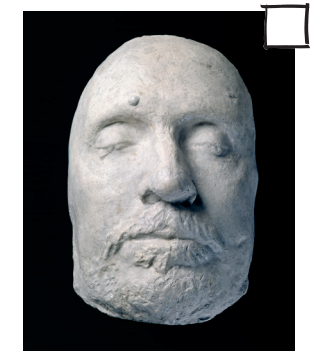


Challenge: Imagine a fancy crown for Charles to wear. Either describe it to your family or add it to the drawing of Charles above:

Poor Charles won't be King for much longer...

4 Find Cromwell's death mask

This is the death mask of Oliver Cromwell. He was the leader of the Parliamentarians, and Charles' number one enemy. He was so important that when he died a wax copy of his face was made. This is known as a death mask. The death mask on display is a plaster copy of the original.



Challenge: Can you guess what age Cromwell was when he died?